



The
Fume
Cupboard
Company

Call us on **01376 619371**
info@thefumecupboardcompany.co.uk

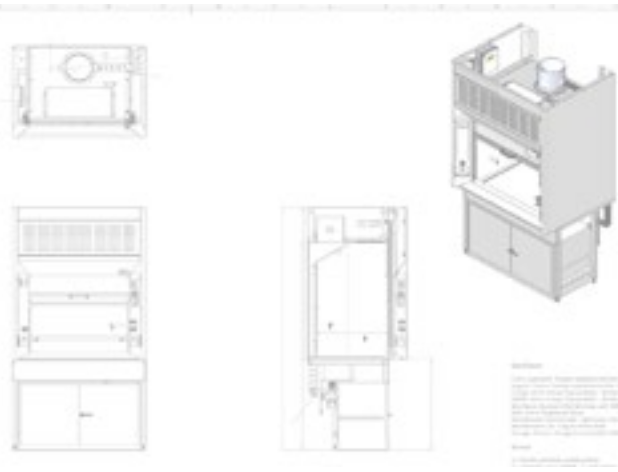


Overcoming Challenges in
Laboratory and
Fume Extraction Planning

thefumecupboardcompany.

Challenges in Laboratory and Fume Extraction Planning

The laboratory furnishing and fume extraction industry plays a pivotal role in creating safe, efficient, and compliant spaces for scientific research. However, this industry faces unique challenges that require thoughtful solutions and expertise. Here, we'll delve into some of these key challenges and share insights on how to overcome them.



Adapting to Rapid Technological Changes

Laboratories today are evolving at an unprecedented rate, driven by technological advancements and the need for more sophisticated equipment. This means laboratory furniture and fume extraction systems must be adaptable and future-proof. Traditional static designs are no longer sufficient; instead, there's a growing demand for modular, flexible systems that can be reconfigured as requirements change.

Solution

Investing in modular lab furniture and extraction systems is crucial. These designs allow for easy reconfiguration without significant downtime, reducing costs associated with laboratory upgrades. Moreover, modularity supports the integration of emerging technologies, making it easier to keep pace with industry changes.

Ensuring Compliance with Safety and Environmental Regulations

Maintaining compliance with safety and environmental standards is one of the biggest challenges in this sector. Regulations can vary significantly between countries, and even between regions, making it crucial to stay updated with current standards.

Solution

Working closely with regulatory experts and keeping up-to-date with the latest standards is essential. Partnering with manufacturers who understand these regulations and offer products that meet or exceed compliance requirements can help laboratories avoid costly retrofits or upgrades. In addition, investing in energy-efficient fume hoods and extraction systems can reduce environmental impact while ensuring safety.

Challenges in Laboratory and Fume Extraction Planning

Balancing Cost with Quality and Durability

There's often pressure to cut costs when outfitting a laboratory, but compromising on quality can lead to long-term issues such as equipment failure, increased maintenance, or even safety risks. The challenge lies in finding the right balance between cost, quality, and durability.

Solution

It's important to conduct a thorough cost-benefit analysis, considering not just the initial investment but also the long-term costs of maintenance, repairs, and potential safety risks. Opting for high-quality, durable materials might have a higher upfront cost, but it typically results in lower long-term expenses. Additionally, choosing suppliers with a proven track record in the industry can ensure reliability and quality.

Managing Ventilation and Air Quality in Complex Lab Environments

Effective fume extraction is critical for ensuring a safe working environment, but it becomes particularly challenging in complex, multi-functional labs where various experiments are conducted simultaneously. Achieving the right balance between adequate ventilation and energy efficiency can be tricky.

Solution

Investing in intelligent ventilation systems that adapt to changing lab conditions is a game-changer. Modern fume extraction solutions can use variable air volume (VAV) technology, which adjusts airflow based on the current needs of the laboratory, ensuring optimal air quality while conserving energy. Regular maintenance and calibration of these systems are also vital to ensure consistent performance.

Customisation vs. Standardisation

Laboratories often have unique requirements based on the type of research conducted, making customisation essential. However, custom solutions can be more expensive and time-consuming to implement compared to standardised options.

Solution

Opt for a hybrid approach. Start with a standardised base system that allows for customisation where needed. This approach ensures that the basic infrastructure is readily available and compliant, while custom elements can be added to meet specific needs without unnecessary delays or costs.

Final Thoughts

The laboratory furnishing and fume extraction industry is continuously evolving, presenting both challenges and opportunities. By embracing flexibility, staying informed about regulations, investing in quality, and adopting intelligent solutions, it's possible to overcome these challenges and create laboratories that are not only safe and compliant but also future-ready.